

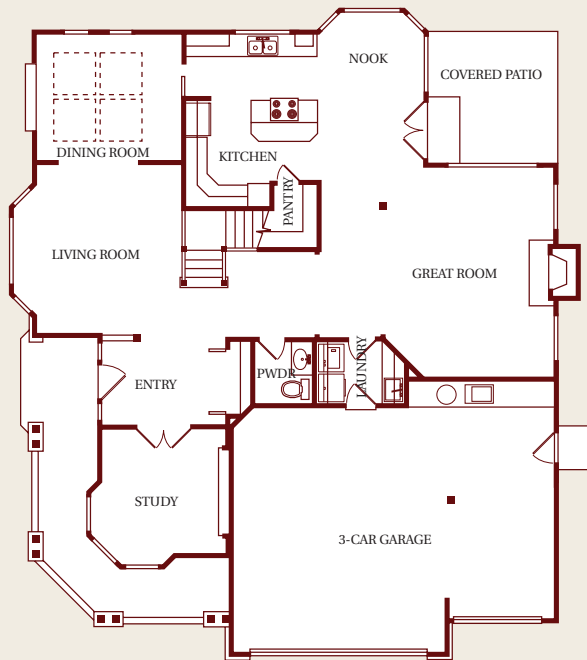
# Zetterberg

Quality Homes

*A family tradition since 1969*



MAIN LEVEL FLOOR PLAN



**PLAN#:** NW340

**SQR FT:** 3,472 TOTAL LIVING

**BEDROOMS:** 4

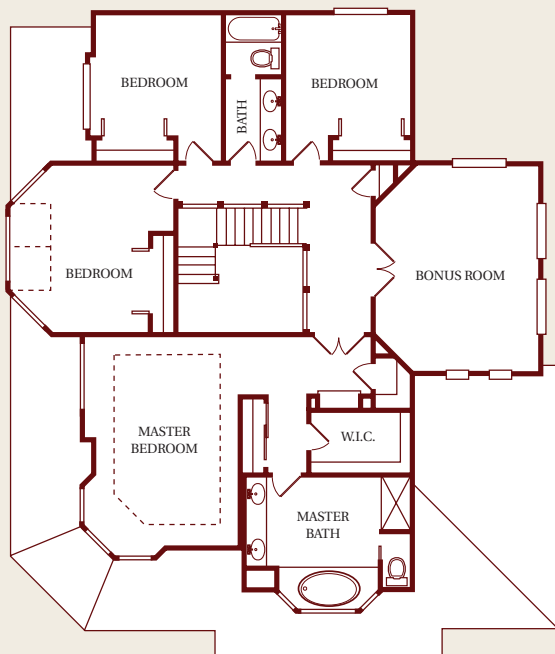
**BATHS:** 2.5

**FEATURES:** OPEN DOWNSTAIRS LIVING, STUDY, COVER BACK PATIO, LARGE MASTER SUITE W/ 3 CLOSET AREAS, LARGE BONUS ROOM

**GARAGE:** 3-CAR

In a continuing effort to improve our homes, Zetterberg Quality Homes, Inc. reserves the right to modify or change materials, specifications, and features without prior notice or obligation. Such changes may not be reflected in our marketing material or in our model homes.

LOWER LEVEL FLOOR PLAN



For more information on this and other Zetterberg projects, visit us at

*Zetterberg.com*



### TIMBERCREST . Gig Harbor, Washington

#### Exterior Features

- 50-year Composition Roofing
- Professional Landscaping & Irrigation Allowance \$15,000.00
- Exposed Aggregate Driveways & Walkways Allowance \$11,000.00
- Matching Exterior Lighting
- Custom Glass Multi-Panel Entry Front Door Allowance \$2,000.00
- Elegant Window Grid Patterns in Front Windows
- James Hardie Lapped & Shingled Exteriors
- Cultured Stone or Brick Accents per plan
- 2 Cultured Stone or Brick Lampposts
- Propane valve for barbecue
- Raised Panel Metal Gallery Garage Doors w/openers
- Three Exterior Paint Colors
- Covered Rear Patio per plan
- Buried 250 Gallon Propane Tank

#### Interior Features

- Spacious 9' Ceilings on Main Floor
- Crown Moulding & Painted Wainscoting Detail in Dining Room
- Crown Moulding in Powder Room, Den & Master Bedroom
- Painted Wood Wrapped Doors & Windows Throughout Home
- 5 ¼" Interior Base & 3 ¼" Colonial Casing
- Stained Millwork, Crown Moulding and 1 Light Glass Door in Study
- Total Kohler Home Plumbing Fixtures
- Leviton Home Wiring Panel with 9 Cable/9 Phone
- Security System Complete with 2 Control Pads
- Garage Door Openers
- Schlage Oil Rubbed Bronze Door Hardware
- Elegant Custom Built Stair Rail System
- Pre-wired A-Bus Sound System with Volume Controls in 6 Locations
- Pre-wired Surround Sound System in 1 Location
- Vacuum System Complete with Super Valve Outlets and Kitchen Floor Vacuum Pan
- Tiled Floors in all Bathrooms and Laundry Room
- Upgraded Carpet with 8# Pad
- Openings are Wood Wrapped or Rounded Sheetrock Corners
- Propane FP in Family Room w/Custom Surround Allowance \$2,600.00

#### Water Conservation Features

- Hot Water Circulating System on Programmable Timer
- Kohler Water Efficient Fixtures
- Predetermined Irrigation Watering Schedule
- Rain Sensor for Automatic Shut-off of Irrigation System

#### Realtor Information:

#### Home Team Northwest

Ron Nelson

Office: (253) 435-1515

Cell: (253) 370-1649

eMail: ron@ronnelson.com

*In a continuing effort to improve our homes, Zetterberg Quality Homes, Inc. reserves the right to modify or change materials, specifications, and features without prior notice or obligation. Such changes may not be reflected in our marketing material or in our model homes.*

#### Hidden Quality Features

- Douglas Fir Studs vs. Hem Fir Studs
- Traditional Double Wall Construction
- Patented Trust Joist Construction for Quiet Floors with Manufacturer's Lifetime Warranty
- Hot Water Circulating System on Programmable Timer
- 2 Zone Heating System in 2 Story Homes
- Electronic Air Filter
- Leviton Home Wiring Panel with Conduit to Attic and Crawlspace
- Pre-wired A-Bus Sound System with Volume Controls in 6 Locations
- Pre-wired Surround System in 1 Location
- Vacuum System Complete with Super Valve Outlets and Kitchen Floor Vacuum Pan
- Soft Close Hinges & Drawers in Kitchen
- Buried 250 Gallon Propane Tank

#### Kitchen Features

- Custom Cherry Cabinetry with Plywood Construction
- Raised Panel Cabinet Doors with Soft Close Technology
- Raised Panel Drawer Fronts with Soft Close Technology
- Lower Cabinet Pull-Out Shelves
- Complete Commercial Grade Appliance Package
- Slab Granite Countertops with Kohler Undermount Sink and Faucet
- Full Height Tile Backsplash
- Under Cabinet / Over Counter Lighting
- Built-in Vacuum Pan
- Beautiful Pre-finished or Sanded-in-place Hardwood Floors

#### Energy Features

- Insulation Meets or Exceeds Washington State Energy Code and Building Codes
- Insulated Heat Ducting
- Installed Vapor Barrier
- Energy Efficient Heat Pump with Back-up Furnace for Heat
- Electronic Air Filter
- Energy Efficient Digital & Programmable Thermostat
- Hot Water Circulating System with 80 Gallon Electric Hot Water Tank on Programmable Timer
- Sealed Propane Fireplaces
- Double Pane Insulated Low E Windows & Siding Glass Doors
- 320 Amp Electrical Service & Panel with Generator Disconnect

#### Master Suite Features

- Master Bedroom Crown Moulding
- Master Bedroom Pre-wired for A-Bus Sound System with Volume Control
- Master Bathroom Five-Piece Kohler Bath Suite
- Slab Granite Countertops in Master Bathroom
- Master Bathroom Tiled Shower with Tiled Mud Pan
- Master Bathroom Tiled Tub Deck and Surround
- Master Bathroom Tiled Floor and Base
- Organized Closet System in Walk-In Closet