

# Zetterberg

Quality Homes

**Home Style:** The Pasadena

**Size in Sqr. ft:** 1,814 Total Living

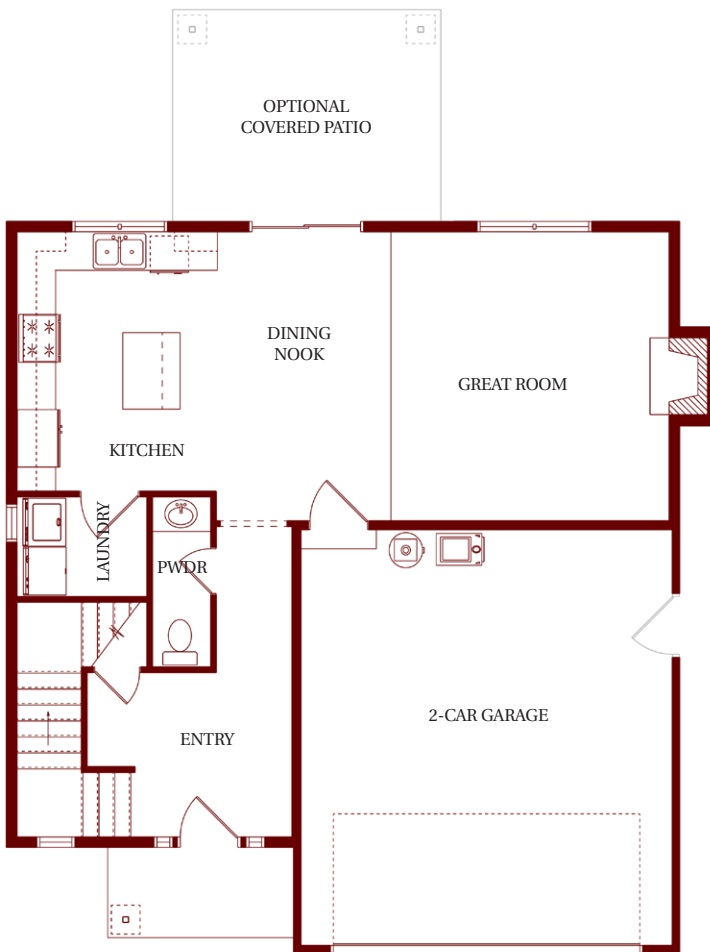
**Beds / Baths:** 4 Beds / 2.5 Baths

**Features:** This 2-story plan offers open downstairs living, optional covered back patio, and generous master suite.

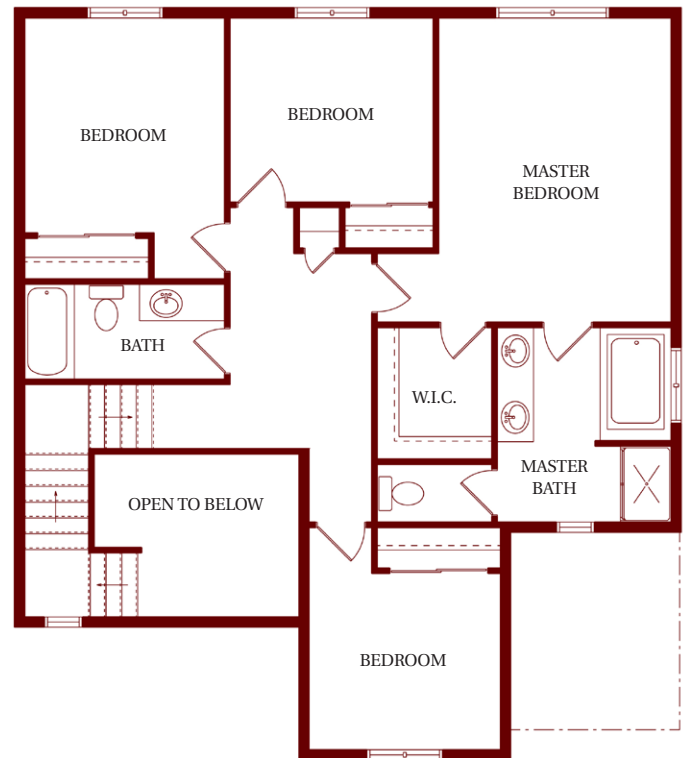
**Garage:** 2-Car



MAIN LEVEL FLOOR PLAN



UPPER LEVEL FLOOR PLAN



For more information on this and other Zetterberg projects, visit us at

[Zetterberg.com](http://Zetterberg.com)

*A family tradition since 1969*

In a continuing effort to improve our homes, Zetterberg Quality Homes, Inc. reserves the right to modify or change materials, specifications, and features without prior notice or obligation. Such changes may not be reflected in our marketing material or in our model homes.



# Letterberg

Quality Homes

## Standard Features

### TRILLIUM PLACE . Spanaway, Washington

#### Exterior Features

- 30 year Composition Roof
- Professional Landscaping & Irrigation –Front Yard Only
- Exposed Aggregate Driveways, Walkways & Patios
- Traditional Entry Doors with Glass
- Traditional Double Wall Construction
- Elegant Window Grid Patterns in Front Windows
- Traditional Styled Fiber Cement Siding with Manufacturer's Warranty
- Spacious 9' Ceilings on Main Floor
- Stone Wainscoting Front Elevation per Plan
- Wood Wrapped Windows on Exterior Front Only

#### Interior Features

- GE Kitchen Appliances
- Laminate Countertops with Full Height Tile Backsplash in Kitchen
- Painted Interior Doors with Wood Casing
- Five Piece Master Suite with Glass Shower Door
- Gas Fireplace in Family Room
- Pre-Finished Hand Scraped Hardwood Floors in Entry, Kitchen & Nook
- Quality Cabinetry
- Tile Backsplash & Tub Decks in Master Bathroom
- Master Suite Walk-in Closet
- Pre-Plumbed for Automatic Ice Maker
- Oil Rubbed Bronze Door Hardware

#### Certified Northwest Energy Star® Builder

- Insulation Meets or Exceeds Washington State Energy Code and Building Codes
- 80% Forced Air Gas Furnace
- Energy Star® Gas Hot Water Heaters
- Insulated Heat Ducting & Cold Air Returns
- Double Pane Insulated, Low-E Windows & Sliding Glass Doors
- Energy Star® Certified Dishwasher
- 60% of Lighting Sockets to be Energy Star® bulbs or fixtures

Realtor Information:

#### Windermere Metro on Commerce

Mark Johnson

Office: (253) 581-9990

Cell: (253) 606-3275

eMail: markjohnson@windermere.com

For more information on this and other  
Letterberg projects, visit us at

[Letterberg.com](http://Letterberg.com)

*A family tradition since 1969*

In a continuing effort to improve our homes, Letterberg Quality Homes, Inc. reserves the right to modify or change materials, specifications, and features without prior notice or obligation. Such changes may not be reflected in our marketing material or in our model homes.

